

## History of Kaminoyama Castle (Another name: Tsukioka Castle)

It is said that Kaminoyama castle was built by Buei Yoshitada at Tenjinmori, Tsukioka in 1535.






Kaminoyama castle was a southernmost stronghold of the house of Mogami's territory, and became stage of battle of the house of Date and the house of Uesugi in the Sengoku period.

In the Edo period, Kaminoyama castle became feudal lord's house, and castle town was developed by Toki, lord of Kaminoyama domain. Kaminoyama castle was known to "fine castle in Utsu country" because of superb castle.

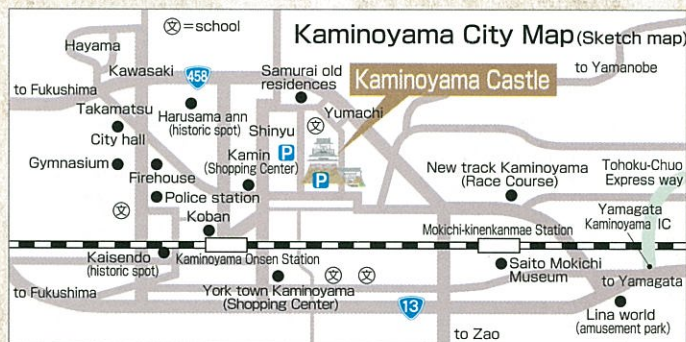
But the Edo shogunate commanded to break it after Toki's moving in 1692, so it remains a part of moats now.

Kaminoyama castle was re-built as history and folklore museum in 1982.

### Lists of successive feudal lords (after 1622)

Family crest	Name of lords	Inauguration	Former post/Territory's amount (unit: goku)/Next post
Kitsukisasa-mon (bamboo leaf) 	Matsudaira Shigetada Sigenao	1622 1626	from Totomi Province: Domains of Yokosuka 40,000 goku to Settsu Province: Domains of Mita
Hidarimitsudomoe-mon (3 souls) 	Gamo Tadatomo	1626	from Mutsu Province: Domains of Aizu 40,000 goku to Iyo Province: Domains of Matsuyama
	Torii Tadamasa	1627	Dewa Province: Lord of Yamagata Domain
Toki kikiyo-mon (Chinese bellflower) 	Toki Yoriyuki Yoritaka	1628 1678	from Shimousa Province: Domains of Souma 25,000 goku → 35,000 goku to Echizen Province: Domains of Nooka
Uraumbachi-mon (plum blossoms) 	Kanamori Yoritoki	1692	from Hida Province: Domains of Takayama 38,000 goku to Mino Province: Domains of Gujohachiman
Uzumikatabami-mon (A leaf of creeping woodsage) 	Matsudaira Nobumichi Nagatsune Nobumasa Nobutsura Nobuhuru Nobuzane Nobuyuki Nobumichi Nobutsune Nobuyasu	1697	from Bichu Province: Domains of Niwase 30,000 goku → 27,000 goku They ruled until end of Edo period.

## Stamp



### Information

#### Admission fees

	Adults	High school & College Students	Elementary & Junior high school
General	¥ 420	¥ 370	¥ 50
Group	¥ 370	¥ 320	¥ 40

※Group: 20 people or more.

**Open:** 9:00 a.m. - 4:45 p.m.  
**Closed:** 29 Dec. - 31 Dec.  
 Every Thursday (Wednesday if a holiday)  
 For more information, please refer to the following H.P.

**Museum facilities:** Elevator, Toilet for wheelchair, wheelchair, baby buggy, crib  
 There is a souvenirs shop "Kakashi-jyaya" sells for local products.

### Public interest incorporated foundation Kaminoyama castle museum

3-7 Motojonai Kaminoyama-Cty, YAMAGATA 999-3154

TEL 023-673-3660 · FAX 023-687-0163

<http://kaminoyama-castle.info>

The Kaminoyama  
municipal castle

# 上山城

Kaminoyama castle







View of Mt. Zao from the observatory.



Distant view of Takadate castle



Harusamean



Samurai old residences Morimoto house



Miwa house



Yamada house



Old Sogabe house

Exhibition hall #2  
"Tuchiyagura tumulus" room



*These exhibition halls are displayed nature, climate, history and culture of Kaminoyama.*



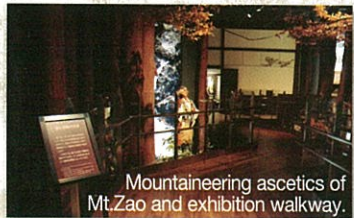
The first sunrise of the year (observatory)



Exhibition hall #3  
"The administration of a clan and castle town of Kaminoyama."



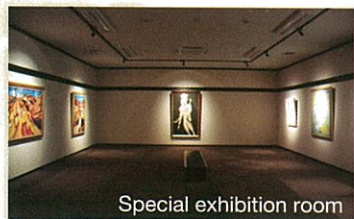
Exhibition hall #3  
"A crane which soak in a hot spring"



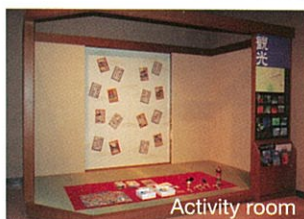
Mountaineering ascetics of Mt. Zao and exhibition walkway.



Display room of Kaminoyama city.



Special exhibition room



Activity room



National important cultural properties "Maps of Shoho castle and domains of Kaminoyama, Dewa Province". Preserved in the National Archives of Japan.



Kaminoyama hot spring source



Tsukioka shrine



Mogami 33 kannons (the Goddess of Mercy)  
Pilgrimage site No. 10  
Yunoue kannon



Shimo ooyu (Public bath)

*This old map was drawn by command of Edo shogunate to lord of Kaminoyama Domain, Toki Yoriyuki, in 1644. This old map shows that the Kaminoyama domain established Sanuuri old residences on the north and west side of castle, and town-houses on the east side of it along the Utsu main road. The modern Kaminoyama city was developed based on old castle town.*